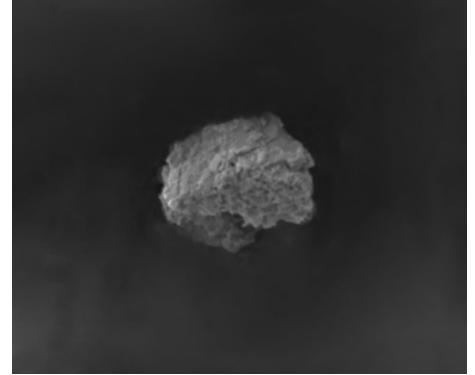




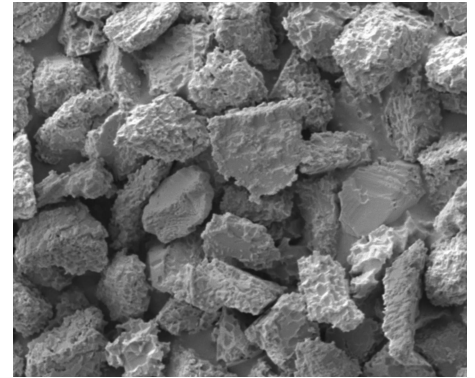
## Polycrystalline-like Diamond Powder - NPLS

Polycrystalline-like diamond powder NPLS is similar to the polycrystalline's feature. Its particle surface has a lot of sharp cutting edges with small cutting edges and low hardness, so it has strong cutting force and high polishing precision. Due to its rough surface, which can be firmly combined with the binder, to improve the holding force of the diamond abrasive products, its service life is longer.



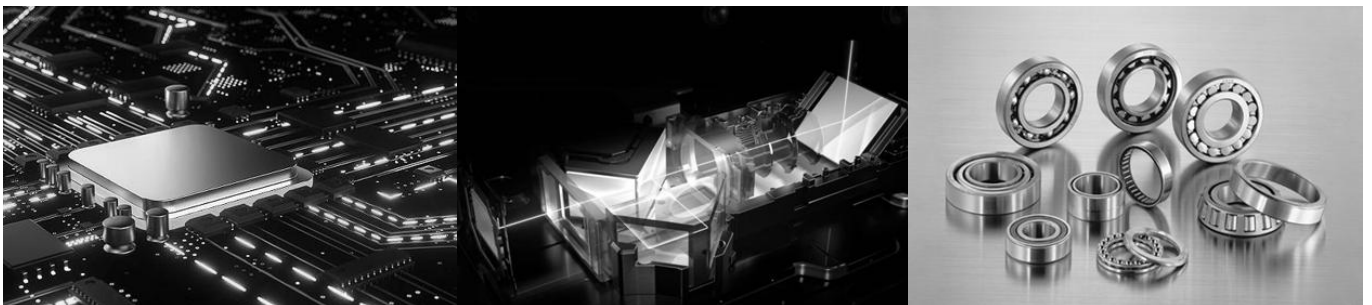
## Characteristics

Polycrystalline-like diamond powder adopts high-quality diamond, which is processed by advanced special technology. Its surface has a large number of small cutting edges, a high self-sharpening performance, which can reduce the surface roughness of the workpiece, and can maintain a high grinding rate. Its crystal form, strength, purity, and particle size distribution of quasi-polymorphs accept precisely customized according to requirements.



## Application

- ◆ Semiconductor processing: silicon wafers, germanium, gallium arsenide, indium phosphide, silicon carbide, gallium nitride and other semiconductor materials.
- ◆ Sapphire processing: sapphire substrates, LED chips, optics lens, watch or clock glass, mobile phone fingerprint recognition films, etc.
- ◆ Ceramic and Metal processing: ceramic materials such as zirconia ceramic special-shaped parts, aluminum nitride substrates, mobile phone ceramic covers, watch ceramic structural parts, stainless steel, aluminum parts, copper parts, mold steel, mobile phone backplane, and other super hard alloy metal materials.
- ◆ Grinding liquid and pads: cooperate with diamond suspension & slurry or diamond pads manufacture.





## Standard Size Range



Order Number	Item Name	Grit Size micron	Median (D50) micron	Median Tolerance micron	Upper limit (D99) micron
1.02.00001	NPLS	0.8-1.5	1.00	0.96~1.04	1.95
1.02.00002	NPLS	1.5-2.75	2.00	1.92~2.08	3.90
1.02.00003	NPLS	2.5-4	3.00	2.88~3.12	5.85
1.02.00004	NPLS	3-5	4.00	3.85~4.16	7.80
1.02.00005	NPLS	4-6.5	5.00	4.81~5.20	9.75
1.02.00006	NPLS	4.5-7.5	6.00	5.77~6.24	11.70

+ Other diamond types /sizes available.

## Packing

100, 1000 or 5000 carats.

Unless specified, orders will be sent in bulk packing units.

All information is non-binding and provided for information purposes only. Subject to change without notice.